

# Software for data loggers

**testo ComSoft Basic**  
**testo ComSoft Professional**  
**testo ComSoft CFR**

---

Three software versions – the right one for every application

---

testo ComSoft Basic – the free standard software

---

testo ComSoft Professional – the comprehensive software

---

testo ComSoft CFR 21 Part 11 – the software for pharmaceutical requirements

---

Convenient export functions e.g. for the further processing of the data in Microsoft Excel

---



For the purposes of programming and reading out the logger, as well as for the analysis of the data, you can choose between three different software versions. Testo has the right solution for your requirements: The free testo ComSoft Basic with a graphic user interface offers all the basic functions of a standard logger software.

Independently of where the loggers are being used – the testo ComSoft Basic makes not only the configuration and readout of the instrument, but also the analysis of the data very easy. User-friendliness and intuitive operation are placed in the foreground here.

Further requirements, such as the collation of measurement data created at different sites, are also excellently fulfilled by the testo ComSoft. Testo even offers an optimum software solution for the special requirements of the pharmaceutical industry: the testo ComSoft CFR 21 Part 11.

# Software for data loggers

## ComSoft Basic

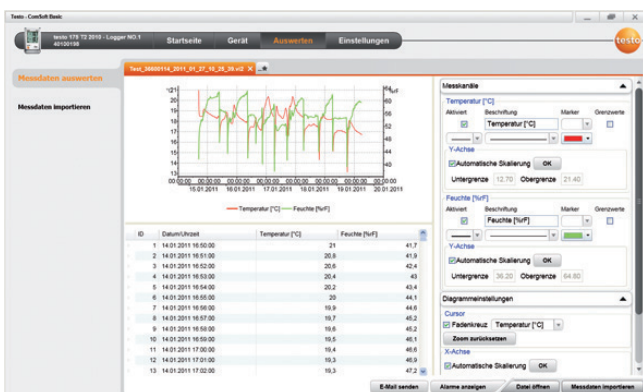
**Free download: [www.testo.com](http://www.testo.com)**

ComSoft Basic, Basic software for programming and readout of Testo data loggers; graphic and tabular measurement value presentation as well as export function As a free download or:

Part no. 0572 0580

### ComSoft Basic – for easy operation and convenient analysis

- Free download of the ComSoft Basic (with registration) at [www.testo.com](http://www.testo.com)
- The ComSoft Basic offers all basic functions of a logger software
- Supports Testo data loggers from the instrument series testo 174, testo 175 and testo 176
- Runs on Windows XP ServicePack 3 (SP3), Windows Vista and Windows 7. More operating systems on request.



### Important functions

- Intuitive user interface guides the user through the individual processes step by step
- Graphic measurement value curve for clear presentation of the measurement values
- Logger configuration: start and stop criterion, measurement interval, storage rate and limit value adjustment
- Convenient export functions e.g. for the further processing of the data in Microsoft Excel, or the generation of a PDF which can be made available to other users.

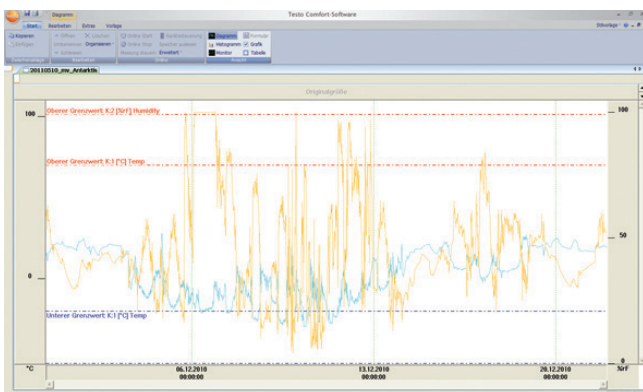
## ComSoft Professional

ComSoft Professional Pro software incl. data archiving for programming and readout of Testo data loggers

Part no. 0554 1704

### ComSoft Professional – for demanding users

- The ComSoft Professional offers analysis and presentation possibilities beyond the basic functions
- Multiple measurement sites and data loggers can be organized, e.g. in a clear tree structure
- Supports Testo data loggers from the instrument series testo 174, testo 175, testo 176 and testo 184
- Runs on Windows XP ServicePack 3 (SP2), Windows Vista and Windows 7. More operating systems on request.



### Important functions:


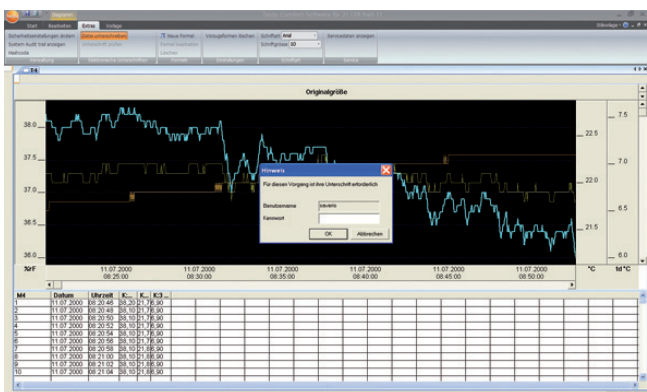
- Adaptation of menu and scope of function
- Selection of different print headings for tabular and graphic printout
- Extended presentation options such as number field, bar display, analog instrument and xy presentation
- Graphic measurement value curve for clear presentation of measurement values
- Logger configuration: start and stop criterion, measurement interval, storage rate and limit value adjustment
- Adjustment functions 0 (mean value) to 7th degree

# Software for data loggers

**ComSoft CFR 21 Part 11**

ComSoft CFR 21 Part 11 – Software for requirements according to CFR 21 Part 11 for the programming and readout of Testo data loggers

Part no. 0554 1705

**ComSoft CFR 21 Part 11 – specially for the requirements of the pharmaceutical industry**

- The ComSoft CFR 21 Part 11 is a validatable software and fulfils all requirements of the FDA (Food and Drug Administration) in a closed system.
- Conformity with the CFR guidelines is confirmed by an independent institute.
- Supports Testo data loggers from the instrument series testo 174, testo 175, testo 176 and testo 184
- Runs on all 32 and 64-Bit operating systems Windows XP SP2, Windows Vista, Windows 7 (excepting the respective "HOME Edition"). Further operating systems on request.

**Important functions:**

- Administration of user groups by administrator
- Storage of raw data in tamper-proof file format
- Recognition of carry-over errors thanks to test sums
- Inactivity lockout to prevent unauthorized access
- Monitoring of login/logout activity, successful/unsuccessful use of digital signatures and alteration of raw data with the help of an Audit Trail

## And which software will you choose?

Select the right software for your application:

	<b>ComSoft Basic</b> 0572 0580	<b>ComSoft Professional</b> 0554 1704	<b>ComSoft CFR 21 Part 11</b> 0554 1705
Logger readout / configuration	X	X	X
Storage rate and measurement interval adjustment	X	X	X
Data export as .xls / .pdf / .html / .csv	X	X	X
Display of diagram and table	X	X	X
Adjustment		X	X
Scientific / statistical evaluation (min./max.; mean value, limit value violation)		X	X
Creation of formulae		X	X
Online measurement		X	X
Report template		X	X
Data archiving		X	X
Electronic signature			X
Allocation of access rights at 3 user levels			X
Audit trail			X



## Accessories

	Part no.	
Cable for connecting the data loggers testo 175 and testo 176 to the PC, Mini-USB to USB	0449 0047	
SD card - for collecting the measurement data from the data loggers testo 175 and testo 176; 2 GB; application range to -20 °C	0554 8803	
USB interface for programming and readout of the loggers testo 174T and testo 174H	0572 0500	

0981 4014/msp/A/09.2015

Subject to change without notice.

### (주)누비콤

#### 서울본사

서울특별시 영등포구 경인로 775(문래동 3가, 에이스하이테크시티 3동 201호)  
 TEL: 070-7872-0701 FAX: 02-2167-3801  
 E-mail: sales@nubicom.co.kr

#### 고객지원센터

TEL: 070-7872-0701, 080-801-7880 FAX: 02-2167-3802  
 E-mail: oft@nubicom.co.kr

#### 대전 사무소

대전광역시 유성구 대덕대로 593(도룡동 386-2) 대덕테크비즈센터 203호  
 TEL: 070-7872-0712 FAX: 042-863-2023  
 E-mail: inyeom@nubicom.co.kr

[www.testo.co.kr](http://www.testo.co.kr)  
[www.nubicom.co.kr](http://www.nubicom.co.kr)  
[www.itestoshop.co.kr](http://www.itestoshop.co.kr)