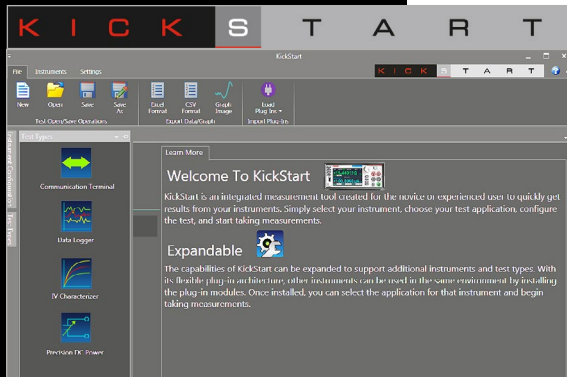


KickStart

Instrument Control Software



- Built-in I-V characterizer, datalogger, and precision multimeter and DC power applications
- Display data in graphical or tabular view
- Save data in Excel or CSV formats
- Built-in instrument Discovery Tool

Download Information

Free KickStart Instrument Control Start-up Software available at www.keithley.com/kickstart

MODELS SUPPORTED

Models 2450, 2460 Advanced Touchscreen SourceMeter® SMU Instrument

Models 2700, 2701, and 2750 (Integra Series) Multimeter/Switch Systems

Model DMM7510 7½-Digit Graphical Sampling Multimeter

Series 2280S Precision Measurement, Low Noise, Programmable DC Power Supplies

PC REQUIREMENTS

Hardware

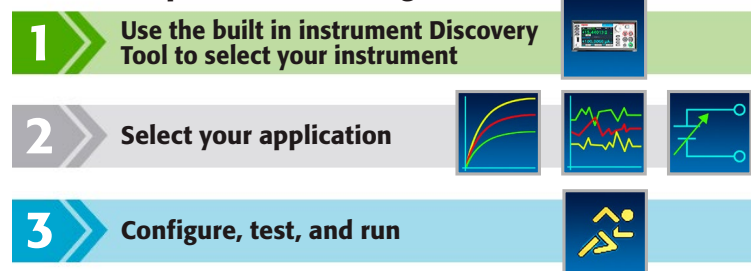
- Processor: 1GHz (2GHz or greater recommended)
- RAM: 1GB (32 BIT), 2GB (64 BIT) (4GB or greater recommended)

OPERATING SYSTEM

- Windows 7 and 8 (32 Bit, 64 Bit)

KickStart Instrument Control Software lets you start taking measurements in minutes without complex instrument programming. Kickstart enables you to perform I-V characterization, data acquisition and logging, and power supply control on a variety of Keithley products. The software interfaces to the instrumentation through any of the standard interfaces: LAN, USB, and GPIB. Data can be displayed in graphical, chart, or both formats. All data can be stored and exported for further analysis in a software environment such as Microsoft Excel®. Graphs can also be exported for installation in technical papers.

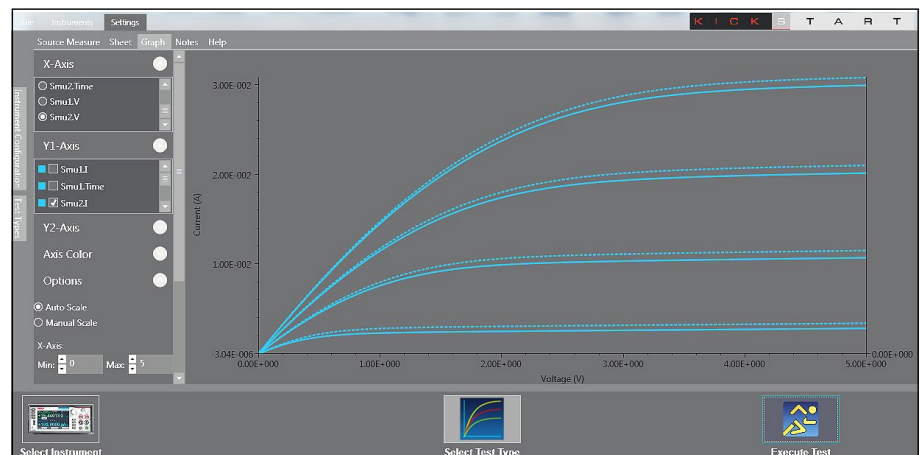
Three Steps to Get Running



Easy I-V Characterization Using Keithley Interactive SourceMeter® Instruments

Combine KickStart's I-V characterizer application with Keithley's Models 2450 and 2460 Interactive SourceMeter Source Measure Unit (SMU) instruments to perform current vs. voltage (I-V) testing quickly and easily on a variety of materials, two-terminal and multi-terminal semiconductor devices, solar cells, embedded systems, etc.

The I-V characterizer application can control up to four interactive SourceMeter SMU instruments linked together. You can configure each SMU instrument for a variety of bias and sweep sourcing operations, including linear, log, list, and dual sweeps and DC bias levels. Whether the application involves sourcing voltage or current, the I-V characterizer gives you the freedom to measure voltage, current, and even resistance—all at the same time. Time-stamping support allows plotting I-V curves as a function of time.



MOSFET Ids-Vds plot versus gate voltages, using two Model 2450 SourceMeter SMU instruments. KickStart even allows appending data to compare experimental results with reference data.

1.888.KEITHLEY (U.S. only)

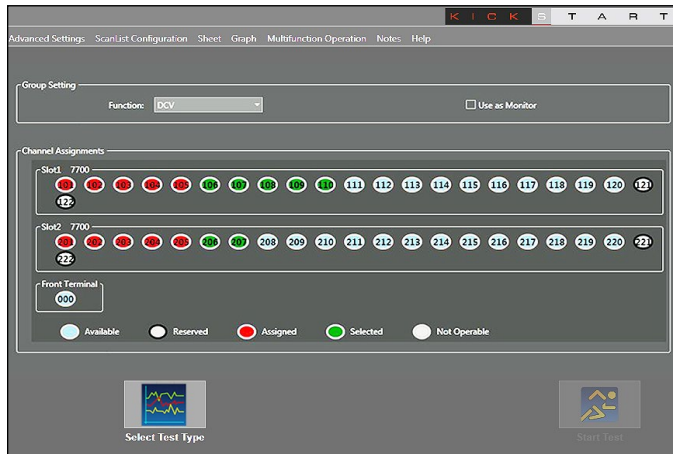
www.keithley.com

A Greater Measure of Confidence

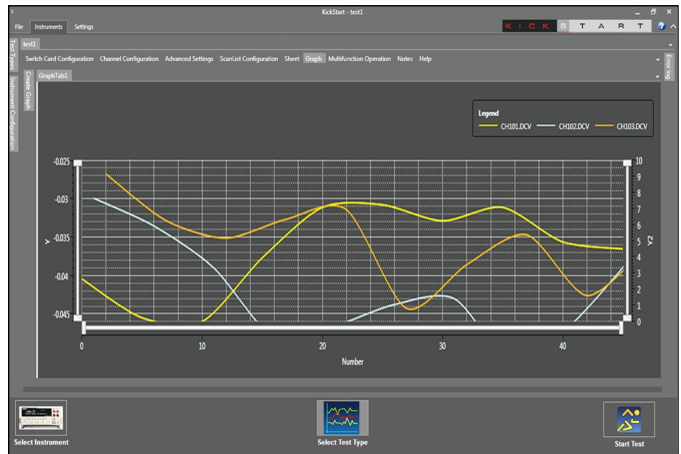
KEITHLEY
A Tektronix Company

Data Acquisition and Logging

Use the datalogger application to set up, program, and control the 80-channel Model 2700, the web-enabled Model 2701, or the 200-channel Model 2750 Integra Series Multimeter/Switch Systems. All three models integrate a 6½-digit precision multimeter, instrument-grade switching, and control in a compact package. Within minutes you can configure channels, set parameters such as limits and triggers sources, and preview results in real time.



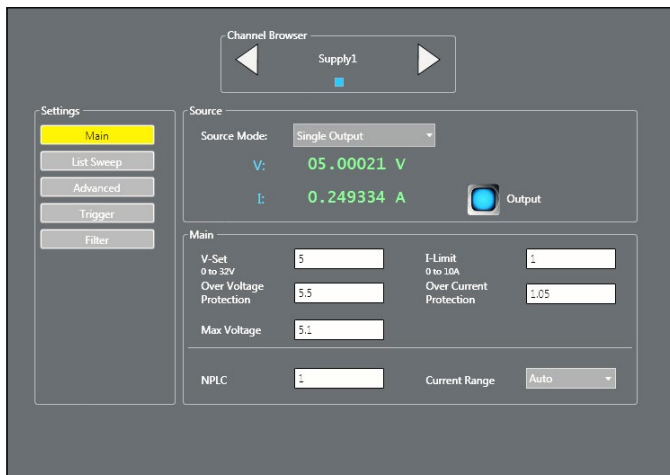
Point and click interface simplifies setup of data channel and multimeter acquisition configurations.



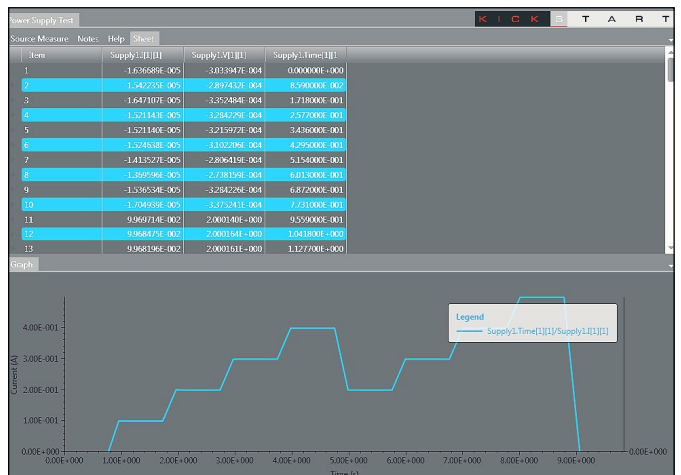
Full complement of display options including graphing and tabular modes. Graphing mode lets you select the channels you want to display.

Controlling Series 2280S Precision Measurement Power Supplies

KickStart's precision DC power application simplifies supplying power to a device or system. You can control the operation of a Series 2280S Precision Measurement Power Supply from your PC keypad to access the extensive features these instruments offer. For example, you can quickly setup automated tests to monitor power consumption over a device's operating states or monitor the stability of a DUT's load current. Use the List Sweep function to test a device's performance automatically over its operating range and monitor device response to voltage transitions.



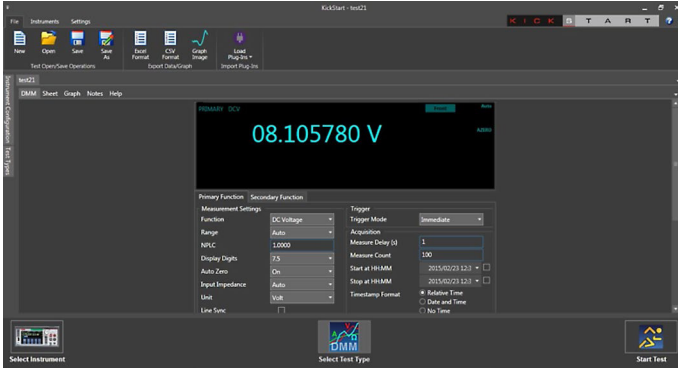
Configure your power supply output, measurement, and protection parameters. Setup a list sweep of voltage values and a control mode to apply a series of voltages to a DUT.



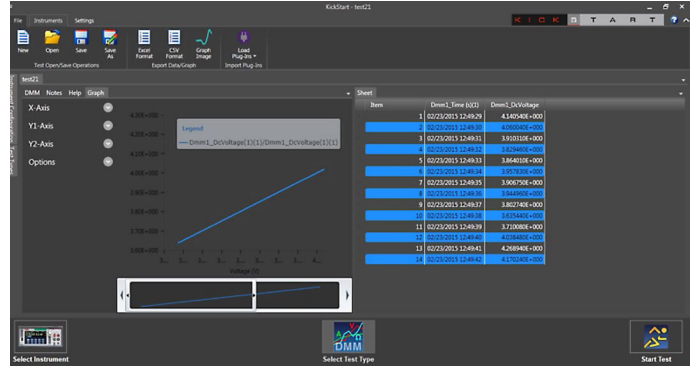
Plot output voltage, load current, or both, and display data in a tabular format. Use the docking tab feature to customize your display window.

DMM7510 Precision Multimeter

KickStart's precision multimeter application allows simple PC configuration and control of the Model DMM7510. Select your measurement function and settings with drop down boxes and virtual front panel display. Programmable triggering allows measurements to be taken when needed.



Drop down boxes and readout provide simple DMM configuration and control.



View measurement results in spreadsheet or graphical views. Use the docking tab feature to customize your display window.



(주)누비콤

서울 본사

서울특별시 영등포구 경인로 775(문래동 3가, 에이스하이테크시티 3동 201호)
TEL: 070-7872-0701 FAX: 02-2167-3801 E-mail: sales@nubicom.co.kr

대전 사무소

대전광역시 유성구 대덕대로 593(도룡동 386-2) 대덕테크비즈센터 203호
TEL: 070-7872-0712 FAX: 042-863-2023 E-mail: inyeom@nubicom.co.kr

Specifications are subject to change without notice. All Keithley trademarks and trade names are the property of Keithley Instruments. All other trademarks and trade names are the property of their respective companies.



A Tektronix Company

A Greater Measure of Confidence

KEITHLEY INSTRUMENTS ■ 28775 AURORA RD. ■ CLEVELAND, OH 44139-1891 ■ 440-248-0400 ■ Fax: 440-248-6168 ■ 1-888-KEITHLEY ■ www.keithley.com

BENELUX
+31-40-267-5506
www.keithley.nl

FRANCE
+33-01-69-86-83-60
www.keithley.fr

ITALY
+39-049-762-3950
www.keithley.it

MALAYSIA
60-4-643-9679
www.keithley.com

SINGAPORE
01-800-8255-2835
www.keithley.com.sg

BRAZIL
55-11-4058-0229
www.keithley.com

GERMANY
+49-89-84-93-07-40
www.keithley.de

JAPAN
81-120-441-046
www.keithley.jp

MEXICO
52-55-5424-7907
www.keithley.com

TAIWAN
886-3-572-9077
www.keithley.com.tw

CHINA
86-10-8447-5556
www.keithley.com.cn

INDIA
080-30792600
www.keithley.in

KOREA
82-2-6917-5000
www.keithley.co.kr

RUSSIA
+7-495-664-7564
www.keithley.ru

UNITED KINGDOM
+44-1344-39-2450
www.keithley.co.uk

For further information on how to purchase or to locate a sales partner please visit www.keithley.com/buy